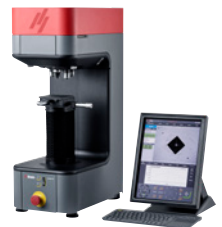
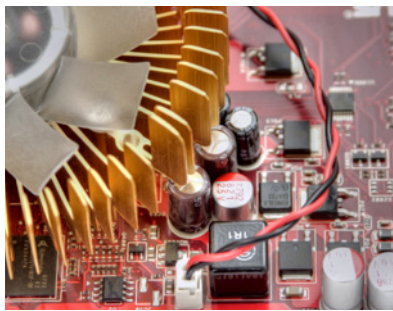


Product Portfolio





ENSURING CERTAINTY — YEAR AFTER YEAR

At Struers we take pride in offering equipment, consumables and knowledge support tailored to your specific needs.

You can ask our experienced Application Specialists for advice about any process issues or for assistance in methods development. You can also obtain prompt, timely and effective service from our certified Service Engineers. And you have instant access, anywhere and at any time, to a wealth of information and training from Struers e-Gate.

We call it ensuring certainty for our customers.

Product Portfolio

Content

Cutting

Precision Cut-off Machines	4
Manual Cut-off Machines	4-5
High capacity Cut-off Machines	5

Mounting

Vacuum Impregnation	6
Hot Mounting Presses	6

Grinding/Polishing

Table top Preparation System	8
Automatic Cleaning Unit	9
Automatic Preparation Systems	10
Semi-Automatic and Manual Preparation	11-12

Hardness Testing

Portable Hardness Testers	14
High-end Hardness Testers	14
Semi-Automatic and Automatic	15

Mineralogy

Manual, Semi-Automatic and Automatic Preparation	17
--	----

Other

Microelectronics and Controlled Material Removal	18-19
Non-Destructive Preparation	20
Electrolytical Preparation	21

Imaging

Weld Analysis - StructureExpert Weld	23
Image Verification - StructureExpert	23

Cutting

Mounting

Grinding

Polishing

Hardness Testing

Mineralogy

Other

Imaging

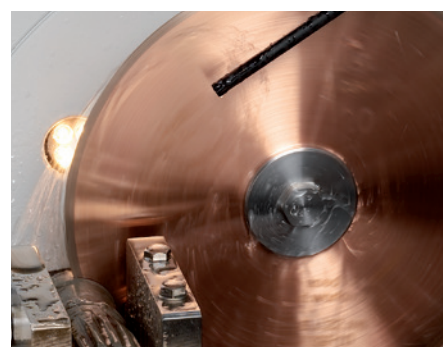
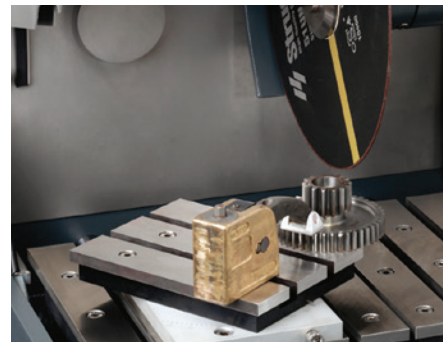
Cutting through Thick and Thin



Perfect materialographic cutting requires precision without overheating or material deformation, usually combined with speed. The cut-off machine and cut-off wheel must match the geometries and composition of the workpieces.

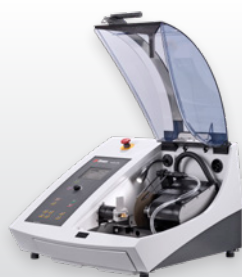
Struers are committed to making your cutting as easy, fast and precise as possible. Reduce your preparation time and costs by making the optimum cut using the winning combination of Struers cut-off machines and cut-off wheels.

- Constant feed speed – the patented movement of the cut-off wheel ensuring high and uniform cutting quality
- ExciCut – for easy and fast cutting of the hardest materials
- OptiFeed – to ensure the fastest possible cutting without damage to the sample or wheel
- AutoStop – for unattended cutting
- MultiCut – for automatic serial cutting of parallel sections
- AxioCut – for cutting of very large workpieces
- AxioWash – the automatic cleaning program



Minitom

Automatic, low-speed precision cut-off machine ideal for delicate cutting applications in small laboratories.
Footprint: W280 mm x D400 mm
Cut-off wheel 75-127 mm dia.



Accutom-10/-100

High precision automatic cut-off machines with smart and intuitive user interface for higher productivity. Grinding mode also available on Accutom-100.
Footprint: W644 mm x D720 mm
Cut-off wheels range 75-150 mm dia.
Grinding cup wheels 100-150 mm dia.



Secotom-6/-20/-60

Universal, automatic, table-top precision cut-off machines for cutting of all types of workpieces.
Footprint: W644 mm x D784 mm
Cut-off wheels 75-203 mm dia.



Labotom-5

Manual cut-off machine with easy to use control panel and ergonomic handle for fast and easy cutting.
Footprint: W700 mm x D680 mm
Cut-off wheel 250 mm dia.



Cut-Off Wheels

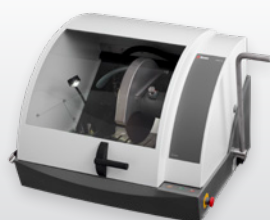
Struers cut-off wheels have an abrasive density that varies across the wheel radius, with increasing density towards the centre of the wheel. This means that the cutting performance of the wheel remains constant even as it wears into a smaller diameter.

Struers cut-off wheels with a hexagonal surface are an addition to our standard line of cut-off wheels. The 3D wheels reduce heat damage with more efficient cooling. In addition, the 3D surface means less cutting debris and easier cleaning of your equipment.



Clamping Tools

Even the most well-built cut-off machine needs good clamping tools. Struers designs solid and easy-to-use clamping tools to meet any requirement. We offer an extensive programme of clamping tools to fit regularly as well as irregularly shaped workpieces.



Labotom-15

Manual cut-off machine with large cutting table, easy to use control panel and ergonomic handle for fast and easy cutting.
Footprint: W870 mm x D877 mm
Cut-off wheel 350 mm dia.



Discotom-100/-10

Automatic and manual cut-off machines with large cutting table and spacious chamber ensuring exceptional cutting flexibility.
Footprint: W920 mm x D890 mm
Cut-off wheels 300 mm dia (Discotom-100) and 250 mm dia (Discotom-10).



Axitom-5

Automatic cut-off machine, designed for maximum user friendliness. X-large cutting chamber and MultiCut for automatic serial cutting of parallel sections.
Footprint: W1155 mm x D1305 mm
Cut-off wheel 350 mm dia.



Magnutom-5000

Magnutom-5000 is the largest machine in its field with four automated axes, as well as a rotary table, which enables a large variety of sectioning possibilities. The motor is so powerful that you can install two cut-off wheels and make parallel sections.
Footprint: W1758 mm x D1463 mm
Cut-off wheels 508 mm dia.

Fast Mounting Right at Your Fingertips



The purpose of mounting is to protect fragile or coated materials during the preparation and to obtain good edge retention. Mounting is also used to produce specimens with uniform size. Two different techniques are available: hot mounting and cold mounting.

Struers mounting presses use a low-mass heating/cooling system allowing for rapid heat transfer and faster cooling. In addition, water consumption can be reduced by 80% with Struers pulsed-cooling system.



Mounting consumables

Struers supply hot and cold mounting resins to meet all your mounting needs: Clear and coloured, resins with good edge retention or with electrical conductivity for electro-polishing. Furthermore, resins suitable for SEM examination, and user-friendly resins in tablet form for fast and clean serial mounting are available to you.



CitoVac

Vacuum impregnation machine for impregnation of porous specimens and for gluing specimens to slides for the production of thin sections. With CitoVac several specimens can be impregnated and embedded at the same time.
Footprint: W380 mm x D370 mm



CitoPress-5

Single cylinder hot mounting press. Incorporates advanced process control to optimise the mounting cycle. Innovative design results in ultra-short heating and cooling times.

Footprint: W480 mm x D560 mm



CitoPress-15

Single cylinder hot mounting press with advanced productivity features. Automatic dosing system enables fast and easy dosing of resin. On-screen Hot Mounting Application Guide. Database option and Sensitive option for porous samples.



CitoPress-30

High-capacity, dual cylinder hot mounting press. Automatic dosing system enables fast and easy dosing of resin. On-screen Hot Mounting Application Guide. Database option and Sensitive option for porous samples.
Footprint: W550 mm x D560 mm

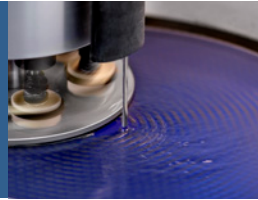


CitoDoser

Optional automatic dosing system, enabling dosing of a pre-set amount of mounting resin. The advantages are faster filling of the cylinders and less spillage of resins.
www.citopress.com



Table top Preparation Systems



Tegramin

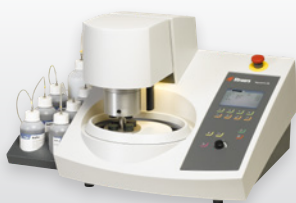
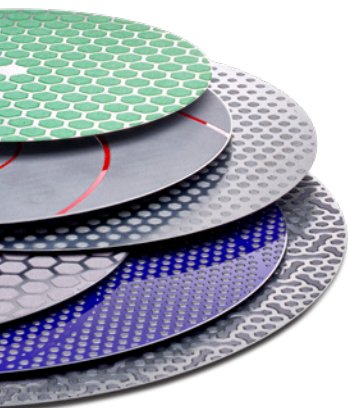
Based on many years of experience, the software of Tegramin has been developed with the materialographic user in mind. An intuitive graphical user interface (GUI) allows you to easily find the correct preparation method and change parameters if necessary. Simply select a method, run the preparation and get reproducible results every time.



MD-System

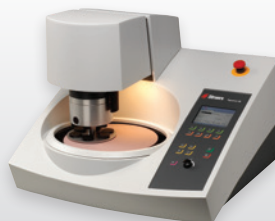
The advanced MD-System comprises a magnetic supporting disc combined with metal-backed grinding discs and polishing cloths.

With MD-System grinding discs you can achieve consistently high material removal rates and maximum flatness, due to uniform removal of hard and soft phases in the specimen. At the same time, you can reduce preparation time and costs significantly.



Tegramin-20

Sturdy 200 mm single-disc machine for the high quality preparation of all materials. Tegramin-20 has variable speed from 40-600 rpm, automatic dosing functions and a built-in database. Designed for the preparation of single specimens. Footprint: W600 mm x D650 mm



Tegramin-25

Durable 250 mm single-disc machine for high quality preparation of all materials. Tegramin-25 has variable speed from 40-600 rpm, and space for up to 7 dosing pumps. Designed for both single specimens and specimens clamped in holders. Footprint: W675 mm x D750 mm



Tegramin-30

*Sturdy 300 mm single-disc machine for intensive, high quality preparation of many or large specimens. Tegramin-30 has variable speed from 40-600 rpm, and can be equipped with up to 7 pumps for dosing of suspension and lubricant. Designed for both single specimens and specimens clamped in holders. Footprint: W675 mm x D750 mm
www.tegramin.com*

Fully Automatic Cleaning Unit



Lavamin

With Lavamin you save time with a faster cleaning process and the opportunity to change the preparation surface while the specimens are being cleaned. You will experience automated cleaning perfection every time and avoid replacement of preparation surfaces due to accidental contamination. In addition to saving you time and costs, Lavamin eliminates chemical cleaning agents and leaves no environmental footprint.

Lavamin is compatible with Struers specimen holders and mover plates with a diameter up to 160 mm.

- Shorten the specimen preparation process
- Avoid replacement of preparation surfaces due to accidental contamination
- Forget about cleaning agents and alcohol
- Use significantly less water
- Eliminate environmental footprint
- Work more comfortably and safely
- Achieve the same perfect result every time



Grinding

Polishing



Levelling tool for adjusting retention rings on individual specimens for Lavamin.

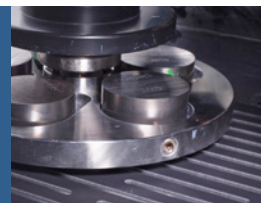


Lavamin

Fully automatic cleaning unit, uses a patent-pending and entirely automated process combining ultrasound and water rinsing together with high-speed spin-drying of the specimen holder/mover plate.

Footprint: W313 mm x D605 mm

Fast, Automatic and High Volume Preparation



Automatic grinding and polishing are ideal where high capacity, short preparation times and maximum reproducibility are essential. Automation gives you faster preparation and reproducible results independent of site, seasonal or staff variations.

Struers automated preparation systems are highly robust, and can be installed in an industrial environment for round-the-clock specimen preparation in quality control.

Reduce costs and improve efficiency and reproducibility with Struers features such as:

- Ease of operation
- Sturdy design for trouble-free preparation year after year
- Built-in dosing systems for consistent dosing of suspensions and lubricants
- Built-in preparation method database for increased repeatability
- High-speed preparation shortening your preparation time by up to 50% and reducing your consumable costs



AbraPol-30

Advanced, semi-automatic machine for grinding and polishing of specimens in specimen holders. With double dosing of diamond suspensions and lubricants for better distribution, removal rate sensor and large disc area for short preparation time. Ideal for testing of very large specimens or a high volume of specimens. Footprint: W840mm x D980mm



AbraPlan-30

Powerful semi automatic plane grinding machine for plane grinding of specimens in specimen holders. AbraPlan-30 has a wide array of features and benefits, enabling users to optimize their grinding process to save time and consumables. Ideal for testing of very large specimens or a high volume of specimens. Footprint: W840 mm x D980 mm



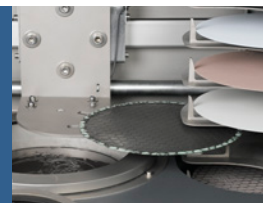
Hexamatic

Automatic specimen preparation with the most user-friendly user interface of today. Nine different preparation surfaces can be combined for the preparation of almost all materials. Both specimens clamped in holders as well as individual specimens can be inserted in the conveyor with a capacity of 8 holders. Footprint: W2980 mm x D880mm



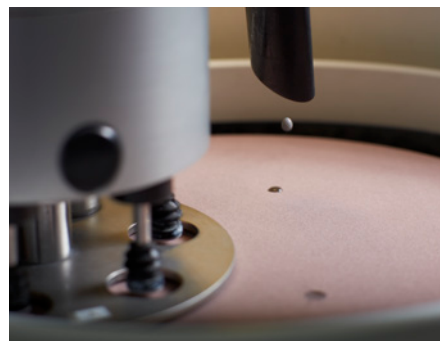
MAPS-2

Modular Automatic Preparation System (MAPS). Allowing a steady flow of materialographic preparation of any number of specimens, from plane grinding to final cleaning and drying. Ideal for the highest capacity requirements. Footprint: W1470 mm x D1080 mm



DiaPro

The unique DiaPro system combines diamond and cooling lubricant in an all-in-one suspension to achieve optimal efficiency and cost-effective performance. Use DiaPro with MD-System consumables to cut costs, and to reduce preparation time by 30% on average.



Grinding

Polishing

Efficient and Economic Grinding and Polishing

Grinding and polishing of specimens is performed in order to create a plane surface, free of deformation and scratches, so that the true microstructure of the specimen becomes clearly visible under the microscope.

The quality of the finished surface is very much dependent upon the equipment and consumables used in the process. Struers provide a full range of grinding and polishing equipment and consumables to cater for the individual preparation requirements of a wide range of materialographic specimen types.

Through our e-Shop you can get access to our full range of consumables as well as a comprehensive list of preparation methods to suit your needs.

e-shop.struers.com



DP Diamond Products

Struers offers high performance diamond products for all purposes within materialographic fine grinding and polishing. The broad product programme allows for any type of preparation, from manual to fully automatic.

Struers diamond products are available as suspensions, sprays, sticks and pastes in grain sizes from 35 μm to 0.1 μm .



LaboPol-20

Grinding and polishing machine for 200 mm diameter disc with variable speed from 50 to 500 rpm. Part of the adaptable LaboSystem. Footprint: W400 mm x D673 mm



LaboPol-30

Grinding and polishing machine for 300 mm diameter disc with variable speed from 50 to 500 rpm. Part of the adaptable LaboSystem. Footprint: W510 mm x D765 mm



LaboPol-60

Grinding and polishing machine with two discs, 250 or 300 mm diameter discs with variable speed 50-500 rpm. It is possible to use one disc for manual and the other for semi-automatic preparation. Part of the adaptable LaboSystem. Footprint: W950 mm x D775 mm



LaboDoser-10

Dosing unit with adjustable drip mechanism. For use with Struers' standard 500 ml/1000 ml bottles with diamond suspension, lubricant and all-in-one products. Part of the adaptable LaboSystem.

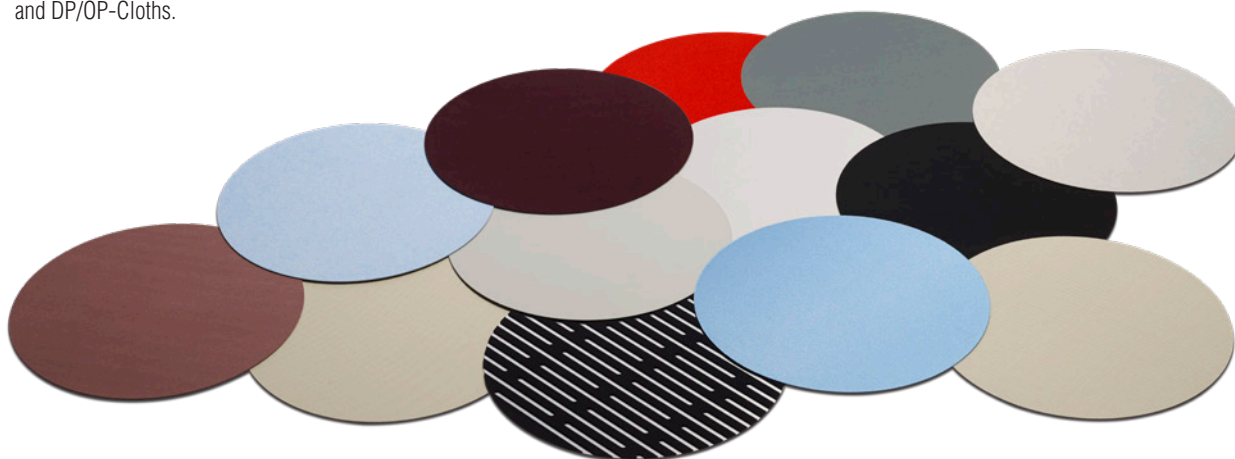
DiaDuo-2

DiaDuo-2 is an all-purpose, all-in-one suspension containing both diamonds and lubricant, for materialographic fine grinding and polishing.



Polishing Cloths

Struers polishing cloths are made of carefully selected fabrics. Extensive tests have led to the development of the market's best polishing cloths in terms of preparation quality and durability. Most polishing cloths are available in two versions: MD-Cloths and DP/OP-Cloths.



Grinding

Polishing



LaboDoser-100

Automatic dosing unit for specimen preparation with LaboPol-30/60. With 4 peristaltic pumps for dosing of diamond suspension, lubricant and all-in-one products. Part of the adaptable LaboSystem. Footprint: W165 mm x D350 mm



LaboForce-100

Specimen mover for semi-automatic preparation of specimens on LaboPol-30/-60. For 1-6 single specimens or sample holder. Part of the adaptable LaboSystem.



LaboForce-50

Specimen mover for semi-automatic preparation of specimens on LaboPol-20. For 1-4 single specimens.
Part of the adaptable LaboSystem.
www.newlabosystem.com

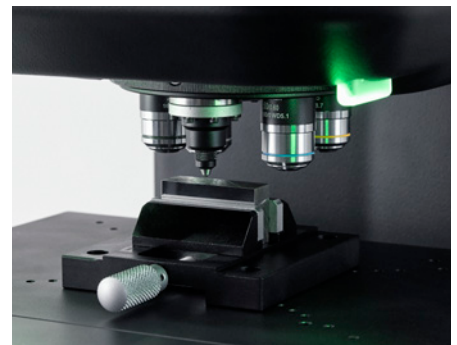
User-friendly Hardness Testing



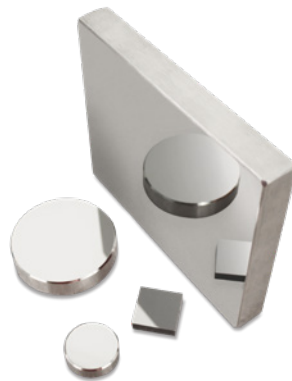
The Struers line of hardness testers are state-of-the-art software-controlled devices which enable Vickers, Knoop, Brinell and Rockwell hardness tests to be performed rapidly, accurately and reliably. Our hardness testers are equipped with a unique test load range, covering many applications.

Easy-operation features such as automated test procedures, automatic illumination adjustment, integrated image analysis and large colour touch-screen help personnel to work faster and more accurately. Thus measured values are no longer dependent on the experience of the operator and on day-to-day variations in operator accuracy.

The various models are scaled for small to large volumes of specimens to meet the full range of micro indentation hardness and macro indentation hardness testing requirements.

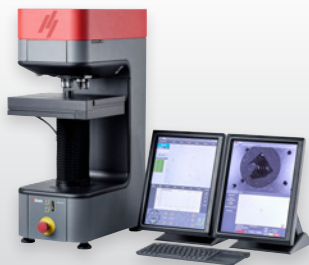


Vickers, Knoop, Brinell and Rockwell Indenters and Test Blocks.



Duramin-4

Manual micro and macro tester with unique test load range from 10 gf to 62.5 kgf, covering many applications. Manual evaluation with eyepiece.
Footprint: W278 mm x D478mm



Duramin-40

Automatic and semi-automatic micro/macro tester system with unique test load range from 1 gf to 62.5 kgf, covering many applications. Autofocus and automatic hardness evaluation for highest repeatability and reproducibility.
Footprint: W278 mm x D478 mm



Duramin-100

Automatic micro/macro/universal tester with unique test load range from 10 gf to 250 kgf, covering many applications. Autofocus and automatic hardness evaluation for highest repeatability and reproducibility.
Footprint: W315 mm x D615 mm



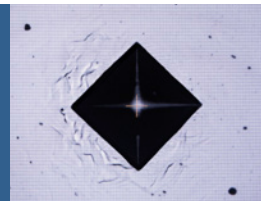
Duramin-150

Entry-level Rockwell tester with test load range from 3 kgf to 150 kgf, covering many applications.
Footprint: W220 mm x D530 mm



Duramin-160

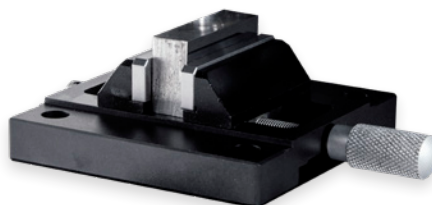
High-end Rockwell tester with unique test load range from 1 kgf to 250 kgf, covering many applications.
Footprint: W291 mm x D554 mm



Struers' hardness tester range
is the result of many years experience within
the field of metal and hardness testing.

Accessories

The Struers hardness testers come with a wide selection of accessories designed to help you with your particular hardness testing operations. A broad range of objective lenses, indenters and additional anvils in various sizes and shapes are available.



Hardness Testing



Duramin-170

High capacity Rockwell tester with unique test load range from 1 kgf to 250 kgf, covering many applications.

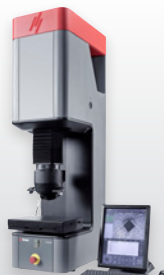
Footprint: W368 mm x D615 mm



Duramin-600

Semi-automatic universal tester with unique test load range from 1 kgf to 3000 kgf, covering many applications. Autofocus and automatic hardness evaluation for highest repeatability and reproducibility.

Footprint: W380 mm x D685 mm



Duramin-650

Semi- and fully automatic universal tester with unique test load range from 1 kgf to 3000 kgf, covering many applications. Autofocus and automatic hardness evaluation for highest repeatability and reproducibility.

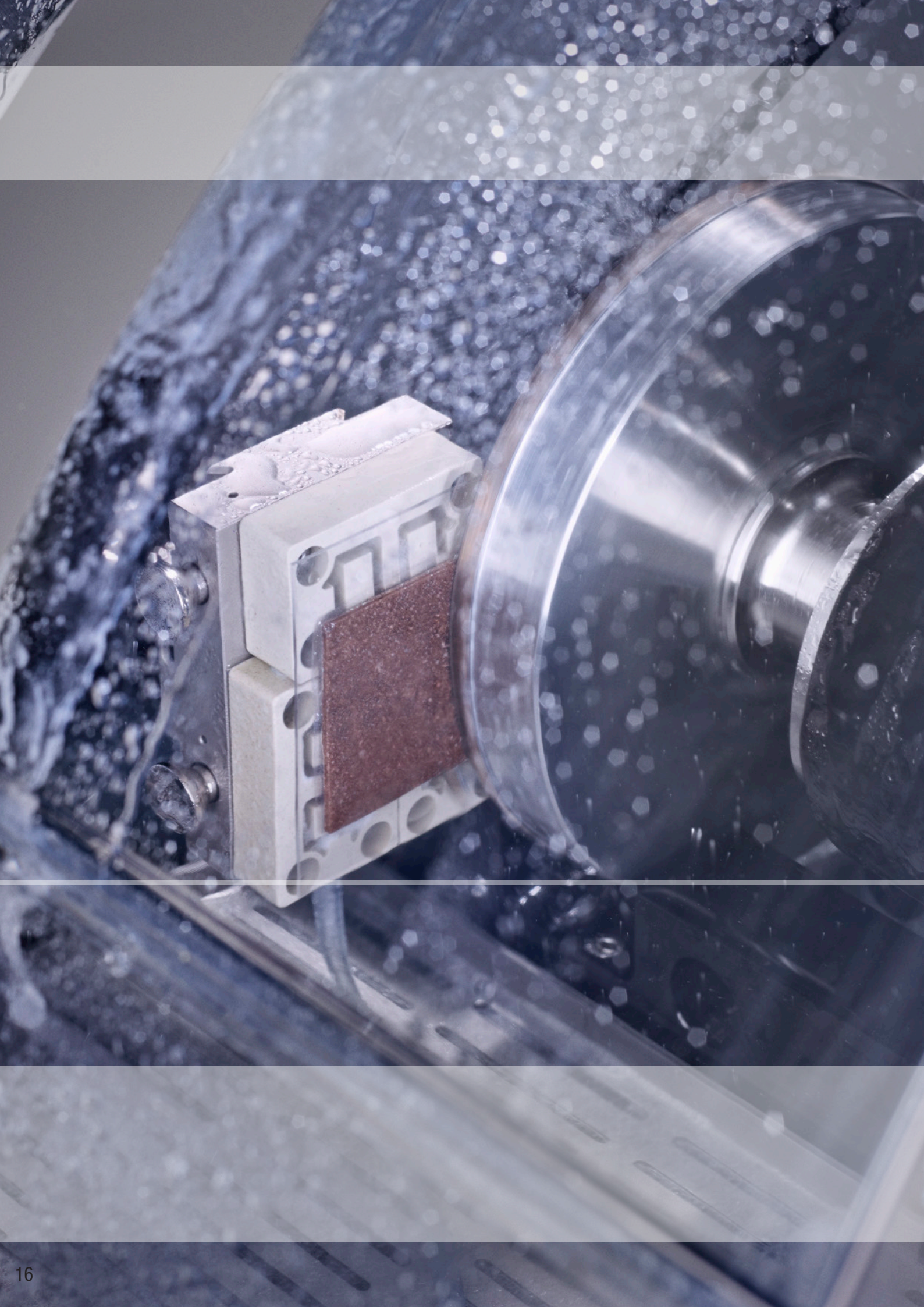
Footprint: W368 mm x D615 mm



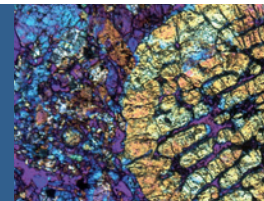
Duramin-3000

Single task Brinell tester with test load range from 62.5 kgf to 3000 kgf, covering many applications. Autofocus and automatic hardness evaluation for highest repeatability and reproducibility.

Footprint: W350 mm x D645 mm



Highly Specialised Systems for Mineralogical Preparation

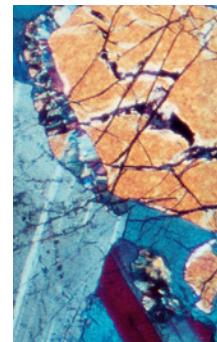


Do you need an efficient system for preparation of mineralogical, geological or ceramic specimens? We offer the equipment and consumables required for producing thin sections or polished sections.

Mineralogical samples often contain both hard and soft phases, requiring specially adapted preparation methods. We acknowledge these particular requirements, and provide appropriate equipment and consumables for slide mounting, embedding and impregnation, and finally, lapping and polishing.

The preparation of thin sections for examination by transmitted light requires highly specialised equipment. Struers offers a system incorporating precision cutting and grinding in a single machine. A grinding accuracy of 2 microns can be achieved in preparation of multiple specimens.

Struers provides both manual and semi-automatic mineralogical specimen preparation equipment to cater for individual variations in volume of specimens and manning.



Accutom-10/-100

High precision automatic cut-off machines with smart and intuitive user interface for higher productivity. Grinding mode also available on Accutom-100.
Footprint: W644 mm x D720 mm
Cut-off wheels range 75-150 mm dia.
Grinding cup wheels 100-150 mm dia.



LaboPol-30

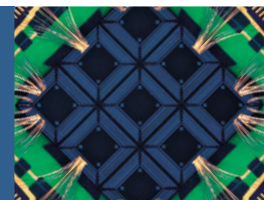
Grinding and polishing machine for 300 mm diameter disc with variable speed from 50 to 500 rpm. Part of the adaptable LaboSystem.
Footprint: W510 mm x D765 mm



LaboForce-Mi

Automatic specimen mover for preparation of mineralogical specimens on LaboPol-30/-60. Part of the adaptable LaboSystem.

The Exact Way to Controlled Material Removal



We offer a range of controlled material removal products to assist you in removing a specific volume or depth of material.

Do you need to reach a specific target in an electronic component? Reach the center of a row of solder balls not even visible to the eye? Do you track the progression of a fatigue crack by successive grinding? Perform step grinding for hardness or homogeneity testing? Or do you have delicate PCB samples, vulnerable to deformation during preparation?

With help from Struers, you can achieve the exact level of control and the configuration you need, in both manual and automated specimen preparation, for both visible and hidden targets.



TargetX

Set-up station for hidden (internal) targets. The station is placed in the users x-ray (not included) and operated from the external console, permitting real-time alignment and measuring. For specimens with visible (external) targets.

Footprint: W705 mm x D385 mm

TargetMaster

Micropolisher for FA labs performing target preparation with very high requirements to precision. Can be used either as stand-alone or with one of the two setup stations, TargetZ and TargetX. The TargetMaster automatically polishes to the desired target within a few microns.

Footprint: W820 mm x D860 mm

TargetDoser

Automatic dosing station, providing preparation methods and process liquids to TargetMaster. TargetDoser comes with 7 pumps, 14 pre-programmed methods, and accommodates 200 user-defined methods.

Footprint: W200 mm x D550 mm

TargetZ

For aligning and measuring specimens with visible (external) targets. With a powerful vision system of up to 680x magnification and its 15" TFT monitor, TargetZ makes it a simple task to map and align even minute targets.

Footprint: W235 mm x D315 mm

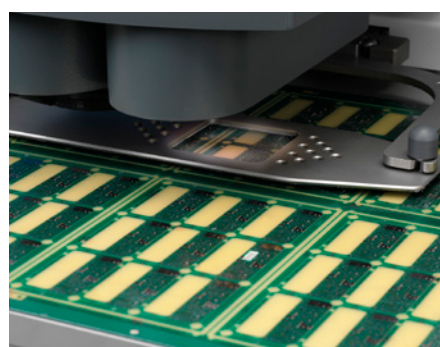
TargetGrip

TargetGrip is a tiltable specimen holder dedicated to TargetMaster. It accommodates mounted samples up to 40 mm diameter. Adapters are provided for larger specimens (TARIN), cross-sectioning (TARSC) and parallel polishing (TARPA), as well as a 40 mm to 25 mm adapter (TARAD), which serves as SEM mount, too.



ViaKit

ViaKit, makes your coupon preparation process much easier. It is designed to be used with the ViaSampler and includes all you need for pinning, mounting and preparing coupons.



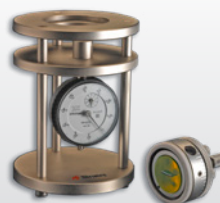
TriPod

Specimen holder for fast precision polishing of non-encapsulated samples such as electronic devices. Only a single adjustment screw is necessary for levelling of the sample. TriPod comes in two models, one for cross-sectioning and one for parallel polishing.



AccuStop and AccuStop-T

Specimen holder for controlled manual grinding of individual materiallographic specimens on SiC grinding paper. A wear-resistant ceramic base allows grinding to stop at a preset depth of the specimen, and ensures that the specimen surface is kept totally plane.



AccuMeter

The AccuMeter Measuring Station was developed especially for use with AccuStop-T. The AccuMeter provides easy measurement of the tilt angle and has a micrometer measuring range is 0-25 mm in steps of 10 µm. The AccuMeter can also be useful together with AccuStop 30.



ViaKit

High-precision toolkit for preparation of up to 36 PCB coupons at a time, making your coupon preparation process much easier. Ensuring that the exact centre of the via are reached on all coupons in just three preparation steps.

Other

Non-destructive Materials Examination by Advanced Replica Technique



For many applications it is either required or more economical to carry out the testing in a non-destructive way in the field.

By means of Struers lightweight portable equipment and advanced replica technique, a high quality replica of the prepared surface can be achieved, allowing a complete evaluation of the surface.

For examination of microstructures we can provide a complete range of portable equipment for non-destructive preparation, from basic grinding through mechanical or electrolytic polishing and etching.

The Transcopy replica technique can transfer the microstructure from flat surfaces, while the RepliSet system can be used for examination of 3D geometry as well. A microstructure or 3D geometry can be examined directly using a small portable microscope. On-site materialographic preparation and examination are particularly applicable to quality control, inspection- and failure analysis in power stations, aircraft, chemical plants etc.



RepliSet System

RepliSet is excellent for examination of 3D geometry in general or in relation to corrosion, fractures or cracks.

The RepliSet system can even produce replicas which are dimensional correct, and have ultra fine detail reproduction as well as a plane back.

RepliSet has no shrinkage.



PSM-5/-10

The PSM-5 and PSM-10 are compact and portable microscopes for use in the field. PSM-5 provides up to 400x magnification, and PSM-10 up to 600x. Both are ideal for examination of prepared surfaces provided by Transpol-5 and Movipol-5.



Movipol-5

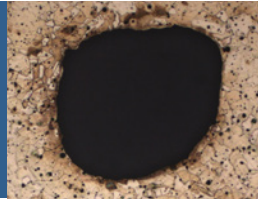
Movipol-5 is a portable electrolytic metal polishing and etching machine. It is compact and robust and can be used anywhere.



Transpol-5

Transpol-5 is a portable, metallographic grinding/polishing machine built to withstand rugged field conditions.

Time-saving Deformation-free Electrolytical Preparation



Avoid mechanical deformation and still maintain efficiency in the preparation of metallic samples. Electrolytic polishing gives you optimal deformation-free sample preparation and is well suited for homogeneous materials. In the electrolytic polisher the sample is configured as the anode in a suitable electrolyte, and material is removed by controlled metal dissolution. Electrolytic polishing can be followed by an etching process to bring forth contrasts in the microstructure of the metal.

Using Struers electrolytic preparation you can achieve electrolytic polishing and etching with just one machine. And we also cater for electrolytic thinning, especially suitable for preparation of samples for TEM (Transmission Electron Microscopy).

Save time by using Struers unique scan function to determine the correct polishing voltage. And maximise reproducibility with Struers micro-processor control and built-in database of preparation methods, giving consistent preparation parameters.



Electrolyte A2

For electrolytic polishing of steel, stainless steel, aluminium and aluminium alloys, nickel alloys, tin and titanium.



TenuPol-5

For automatic, electrolytical thinning of specimens for examination in a transmission electron microscope. The specimen is polished from both sides simultaneously, thus providing a structure with a minimum of deformation in just a few minutes.

Control unit Footprint:
W385 mm x D350 mm
Polishing unit Footprint:
W270 mm x D180 mm



LectroPol-5

For automatic, micro-processor controlled electrolytic polishing and etching of metallographic specimens. The unique scan function and built-in methods gives short preparation times and high reproducibility. Ideal for fast quality control.

Control unit Footprint:
W385 mm x D350 mm
Polishing unit Footprint:
W220 mm x D350 mm



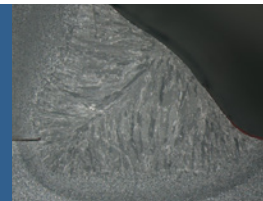
It has never been
easier to find the right
Consumables



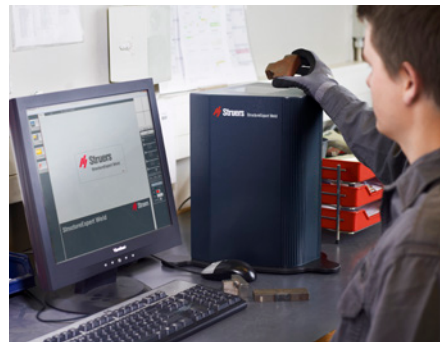
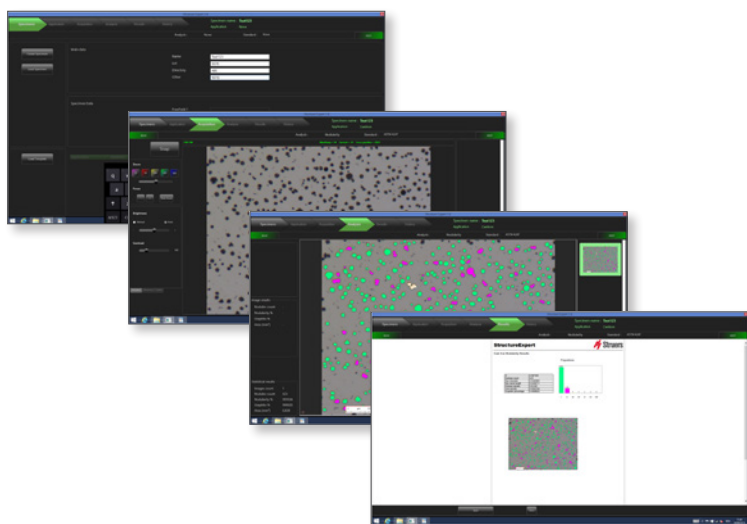
Check the catalog now!

Dedicated Image Verification

All in one solution



Challenging conventional technology, Struers offers two dedicated image verification systems that do away with time consuming positioning and adjustments. The unique inverted optical system, automatic lighting, focus and calibration eliminate time-consuming, manual processes and measurement errors. These stand-alone dedicated imaging tools give you a simple way to ensure precise and cost-efficient inspection/verification, measurement and reporting – all in one solution.



StructureExpert Weld-5/-11

Dedicated imaging system for weld bead measurement.

Consists of compact housing, LED lighting system, digital camera with motorized zoom and dedicated software for measurement and reporting.

Footprint: W248 mm x D220 mm



StructureExpert

Dedicated imaging system for verification of microstructures and dimensional measurements.

Based on a workflow oriented user interface for easy and repeatable operation.

Footprint: W200 mm x D500 mm

Struers ApS
Pederstrupvej 84
DK-2750 Ballerup, Denmark

Phone +45 44 600 800
Fax +45 44 600 801
struers@struers.dk
www.struers.com

AUSTRALIA & NEW ZEALAND

Struers Australia
27 Mayneview Street
Milton QLD 4064
Australia
Tel.: +61 7 3512 9600
Fax: +61 7 3369 8200
info.au@struers.dk

**BELGIUM (Wallonie)
Struers S.A.S.**
370, rue du Marché Rollay
F-94507 Champigny
sur Marne Cedex
Tel.: +33 1 5509 1430
Fax: +33 1 5509 1449
struers@struers.fr

**BELGIUM (Flanders)
Struers GmbH Nederland**
Zomerdijk 34 A
3143 CT Maassluis
Tel.: +31 (10) 599 7209
Fax: +31 (10) 5997201
netherlands@struers.de

**CANADA
Struers Ltd.**
7275 West Credit Avenue
Mississauga, Ontario L5N 5M9
Tel.: +1 905-814-8855
Fax: +1 905-814-1440
info@struers.com

**CHINA
Struers Ltd.**
No. 1696 Zhang Heng Road
Zhang Jiang Hi-Tech Park
Shanghai 201203, P.R. China
Tel.: +86 (21) 6035 3900
Fax: +86 (21) 6035 3999
struers@struers.cn

**CZECH REPUBLIC & SLOVAKIA
Struers GmbH Organizační složka**
vědeckotechnický park
Přílepská 1920,
CZ-252 63 Roztoky u Prahy
Tel.: +420 233 312 625
Fax: +420 233 312 640
czechrepublic@struers.de
slovakia@struers.de

**GERMANY
Struers GmbH**
Carl-Friedrich-Benz-Straße 5
D- 47877 Willich
Tel.: +49 (0) 2154 486-0
Fax: +49 (0) 2154 486-222
infoservice@struers.de

**FRANCE
Struers S.A.S.**
370, rue du Marché Rollay
F-94507 Champigny
sur Marne Cedex
Tel.: +33 1 5509 1430
Fax: +33 1 5509 1449
struers@struers.fr

**HUNGARY
Struers GmbH**
Magyarországi Fióktelep
2040 Budaörs
Szabadság utca 117
Phone +36 (23) 80 60 90
Fax +36 (23) 80 90 91
hungary@struers.de

**IRELAND
Struers Ltd.**
Unit 11 Evolution@ AMP
Whittle Way, Catcliffe
Rotherham S60 5BL
Tel.: +44 0845 604 6664
Fax: +44 0845 604 6651
info@struers.co.uk

**ITALY
Struers Italia**
Via Monte Grappa 80/4
20020 Arese (MI)
Tel.: +39-02/38236281
Fax: +39-02/38236274
struers.it@struers.it

**JAPAN
Struers K.K.**
Takanawa Muse Bldg. 1F
3-14-13 Higashi-Gotanda, Shinagawa
Tokyo
141-0022 Japan
Tel.: +81 3 5488 6207
Fax: +81 3 5488 6237
struers@struers.co.jp

**NETHERLANDS
Struers GmbH Nederland**
Zomerdijk 34 A
3143 CT Maassluis
Tel.: +31 (10) 599 7209
Fax: +31 (10) 5997201
netherlands@struers.de

**NORWAY
Struers ApS, Norge**
Sjøskogenveien 44C
1407 Vinterbro
Tel.: +47 970 94 285
info@struers.no

**AUSTRIA
Struers GmbH**
Zweigniederlassung Österreich
Betriebsgebiet Puch Nord 7
5412 Puch
Tel.: +43 6245 70567
austria@struers.de

**POLAND
Struers Sp. z o.o.**
Oddział w Polsce
ul. Jasnogórska 44
31-358 Kraków
Tel.: +48 12 661 20 60
Fax: +48 12 626 01 46
poland@struers.de

**ROMANIA
Struers GmbH, Sucursala Bucuresti**
Str. Preciziei nr. 6R
062203 sector 6, Bucuresti
Tel.: +40 (31) 101 9548
Fax: +40 (31) 101 9549
romania@struers.de

**SWITZERLAND
Struers GmbH**
Zweigniederlassung Schweiz
Weissenbrunnstraße 41
CH-8903 Birmensdorf
Tel.: +41 44 777 63 07
Fax: +41 44 777 63 09
switzerland@struers.de

**SINGAPORE
Struers Singapore**
627A Aljunied Road,
#07-08 BizTech Centre
Singapore 389842
Tel.: +65 6299 2268
Fax: +65 6299 2661
struers.sg@struers.dk

**SPAIN
Struers España**
Camino Cerro de los Gamos 1
Building 1 - Pozuelo de Alarcón
CP 28224 Madrid
Tel.: +34 917 901 204
Fax: +34 917 901 112
struers.es@struers.es

**FINLAND
Struers ApS Suomi**
Sahaajankatu 20-22 A6
00880 Helsinki
Tel.: +358 (0)207 919 430
finland@struers.fi

**SWEDEN
Struers Sverige**
Box 20038
161 02 Bromma
Tel.: +46 (0)8 447 53 90
Fax: +46 (0)8 447 53 99
info@struers.se

**UNITED KINGDOM
Struers Ltd.**
Unit 11 Evolution @ AMP
Whittle Way, Catcliffe
Rotherham S60 5BL
Tel.: +44 0845 604 6664
Fax: +44 0845 604 6651
info@struers.co.uk

**USA
Struers Inc.**
24766 Detroit Road
Westlake, OH 44145-1598
Tel.: +1 440 871 0071
Fax: +1 440 871 8188
info@struers.com

Ensuring Certainty

With offices and affiliates in 24 countries and a presence in more than 50 countries worldwide, Struers is the world's leading materialographic solution supplier. We are dedicated to enabling our customers to ensure certainty in all aspects of materialographic preparation and testing as well as material hardness testing - wherever they are in the world. Struers offers a complete range of equipment, consumables, service and training programmes – all supported by the most comprehensive knowledge base, global applications support and a certified global service set-up.

Learn more

Contact a Struers sales representative today or visit www.struers.com



Buy your consumables
in Struers e-Shop!
e-shop.struers.com